

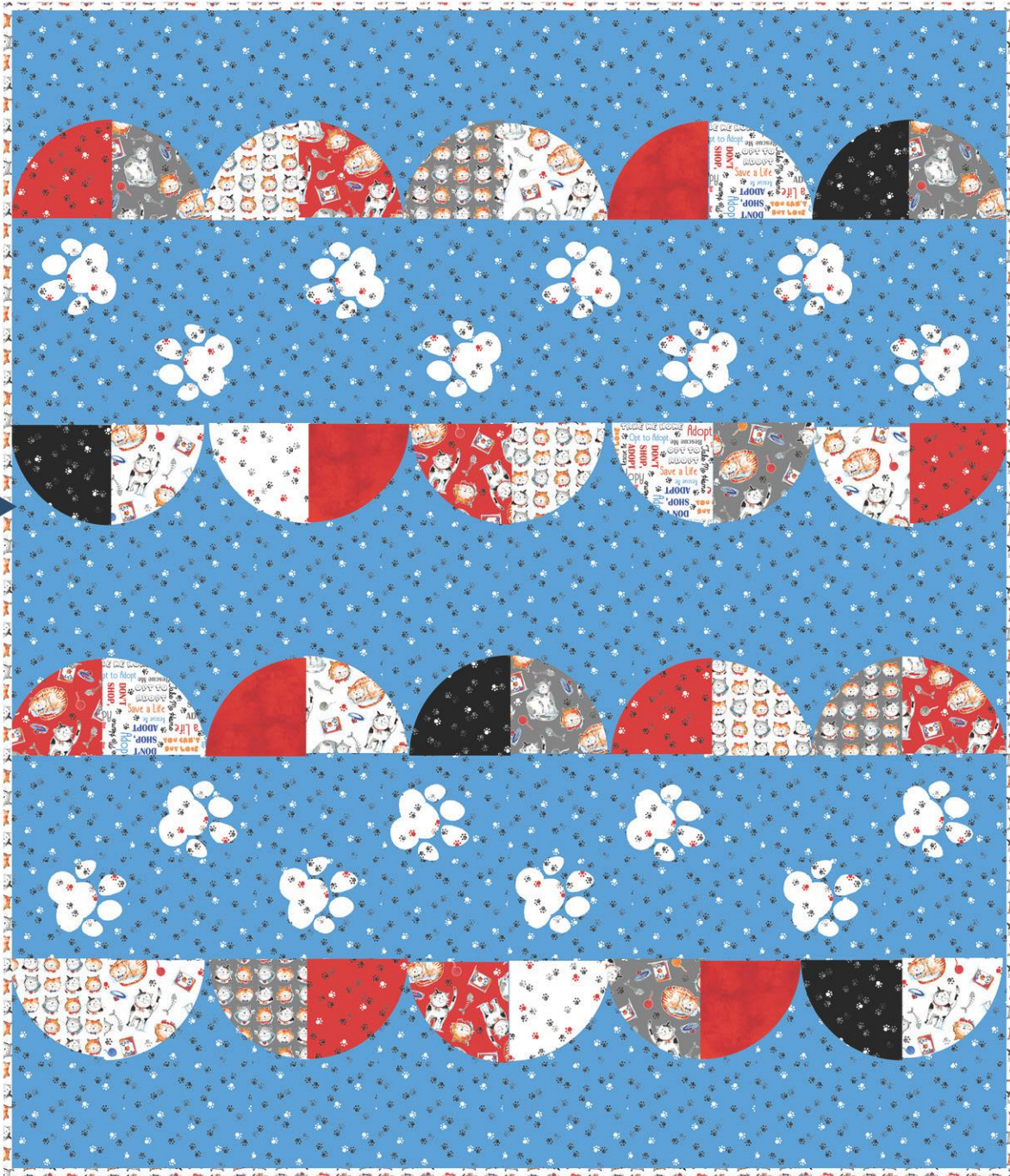
Cool Cats

Designed by Casey York

Featuring Take Me Home by Whistler Studios

SIZE: 60" x 70"

FREE
PROJECT



THIS IS A DIGITAL REPRESENTATION OF THE QUILT TOP, FABRIC MAY VARY.

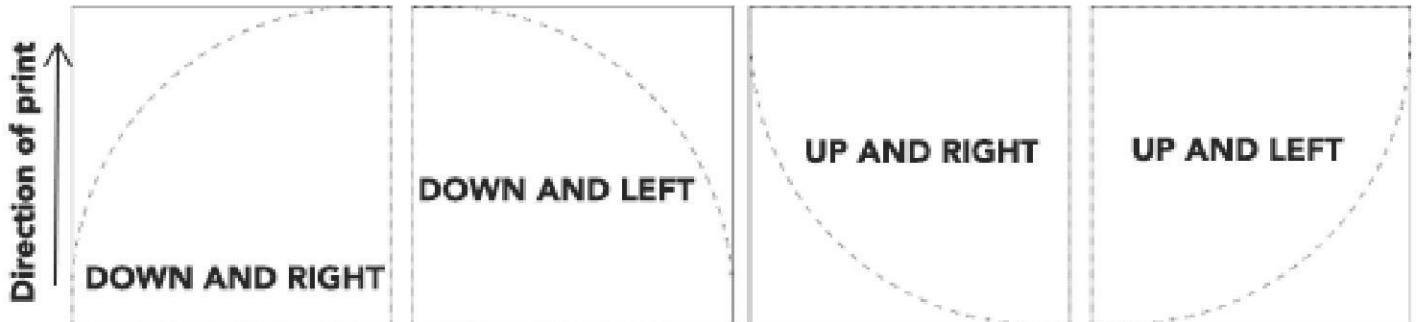
PLEASE NOTE: BEFORE MAKING YOUR PROJECT, CHECK FOR ANY PATTERN UPDATES AT WINDHAMFABRICS.COM'S FREE PROJECTS SECTION.



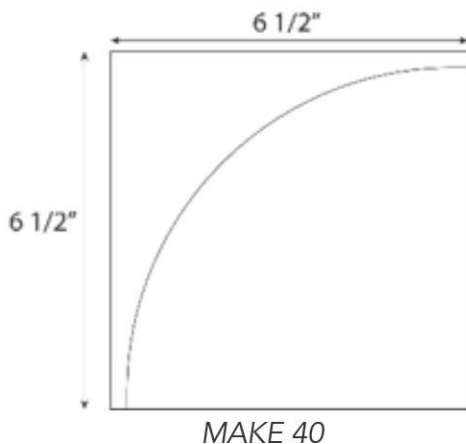
Hot Dogs

Cut and piece the Drunkard's Path Blocks:

1. Use the Arc template to cut Arc Units from the (40) **A** 6-1/2" squares.
2. Use the Wedge template to cut Wedge Units from **B, C, D, E, F, G, H, I, J, K** 6-1/2" squares. Note the directionality of the fabric, and cut: (*Diagram 1*)
 - (10) Units facing Up and Right: (2)B, (1)C, (1)D, (1)E, (1)F, (2)H, (1)I, (1)K
 - (10) Units facing Down and Right: (1)C, (3)D, (2)G, (1)I, (2)J, (1)K
 - (10) Units facing Up and Left: (1)B, (2)F, (2)G, (2)H, (2)J, (1)K
 - (10) Units facing Down and Left: (2)B, (3)C, (2)D, (2)E, (1)K



3. Match each print Wedge with an A Arc. With right sides together, pin Arc and Wedge Units together along the curved edges, matching raw edges. Sew with Wedge Units on top of Arc Unit.
4. Stitch along curve using a 1/4" seam to make (40) Drunkard's Path units. If needed, trim each unit to measure 6-1/2" square. (*Diagram 2*)



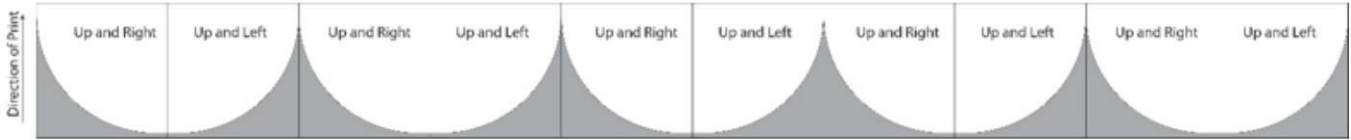
Piece the scallop borders:

1. Piece together (5) Drunkard's Path units with Wedges facing **Up and Right** and (5) units with Wedges facing **Up and Left**, alternating the directions in which the wedges face to form a scallop pattern (*Diagram 3*). Repeat with the remaining units facing **Up and Right** and **Up and Left**. Piece together the units facing **Down and Right** and **Down and Left** in the same way.

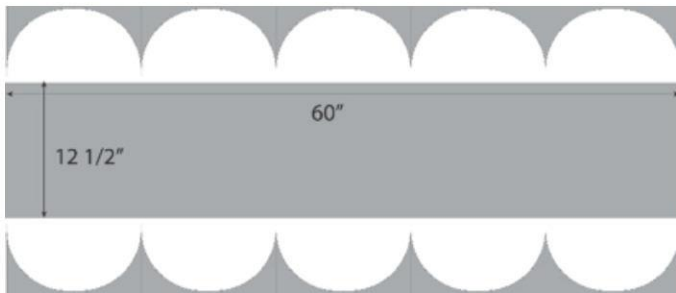
You should now have (4) pieced strips, (2) with scallops facing down and (2) with scallops facing up.



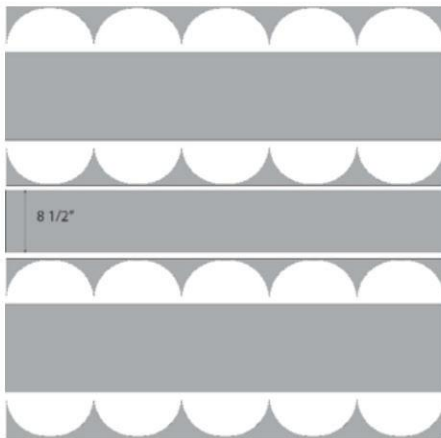
Hot Dogs



2. Stitch (1) strip with scallops facing up to the top 60" edge of each **A** 12 1/2" X 60" strip. Stitch (1) strip with scallops facing down to the bottom 60" edge of these units to form (2) Scalloped Units (Diagram 4).



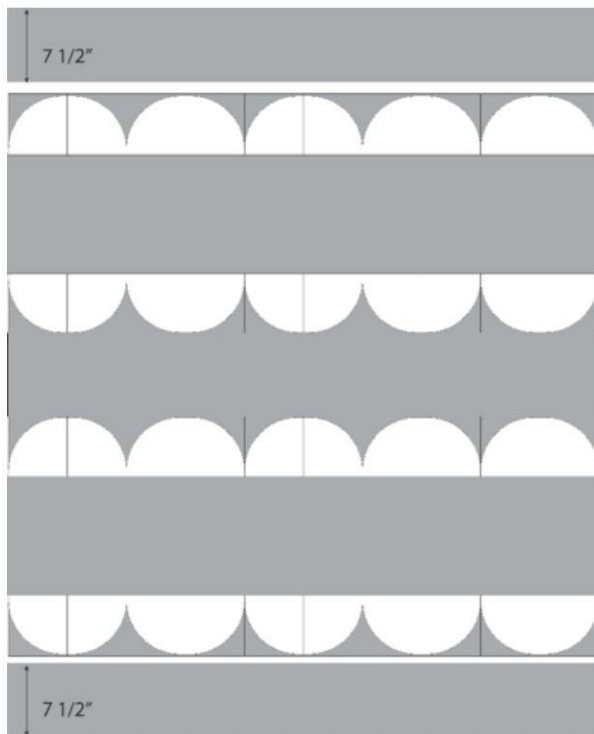
3. Stitch (1) Scalloped Unit to each 60" edge of the A 8 1/2" x 60" strip to form the Center Unit (Diagram 5).



4. Stitch (1) A 7 1/2" x 60" strip to each side of the Center Unit to complete the quilt center.



Hot Dogs



Make and stitch the appliqués:

1. Print (8) Right Paw Print templates and (8) Left Paw Print applique templates.
2. Following the manufacturer's instructions, trace the templates onto the paper backing of the fusible web. Copy the fabric recommendations onto each traced template.
3. Cut out the traced templates, leaving a 1/4" margin around the edges.
4. Following the manufacturer's instructions, fuse the traced templates to the **wrong** side of each appliqué fabric.
5. Using very sharp scissors to minimize fraying, cut out the fabric shapes along the traced lines. For this pattern, it is recommended that you cut out each appliqué just before placing and pinning it to the background.
6. Following the **Placement Diagram**, arrange the appliqués on the solid **A** background strips. Remove the paper backing from the fusible web and pin each appliqué in place as you go.
7. When you are satisfied with your layout, use an iron to permanently fuse the fabric shapes to the background, again following the manufacturer's instructions (remember to remove pins before fusing!)
8. Stitch around each shape to secure to background. A zig-zag or machine blanket stitch can be used, using matching thread or invisible thread. A straight stitch can also be used, although this will result in more fraying of the appliqué fabrics along their edges.

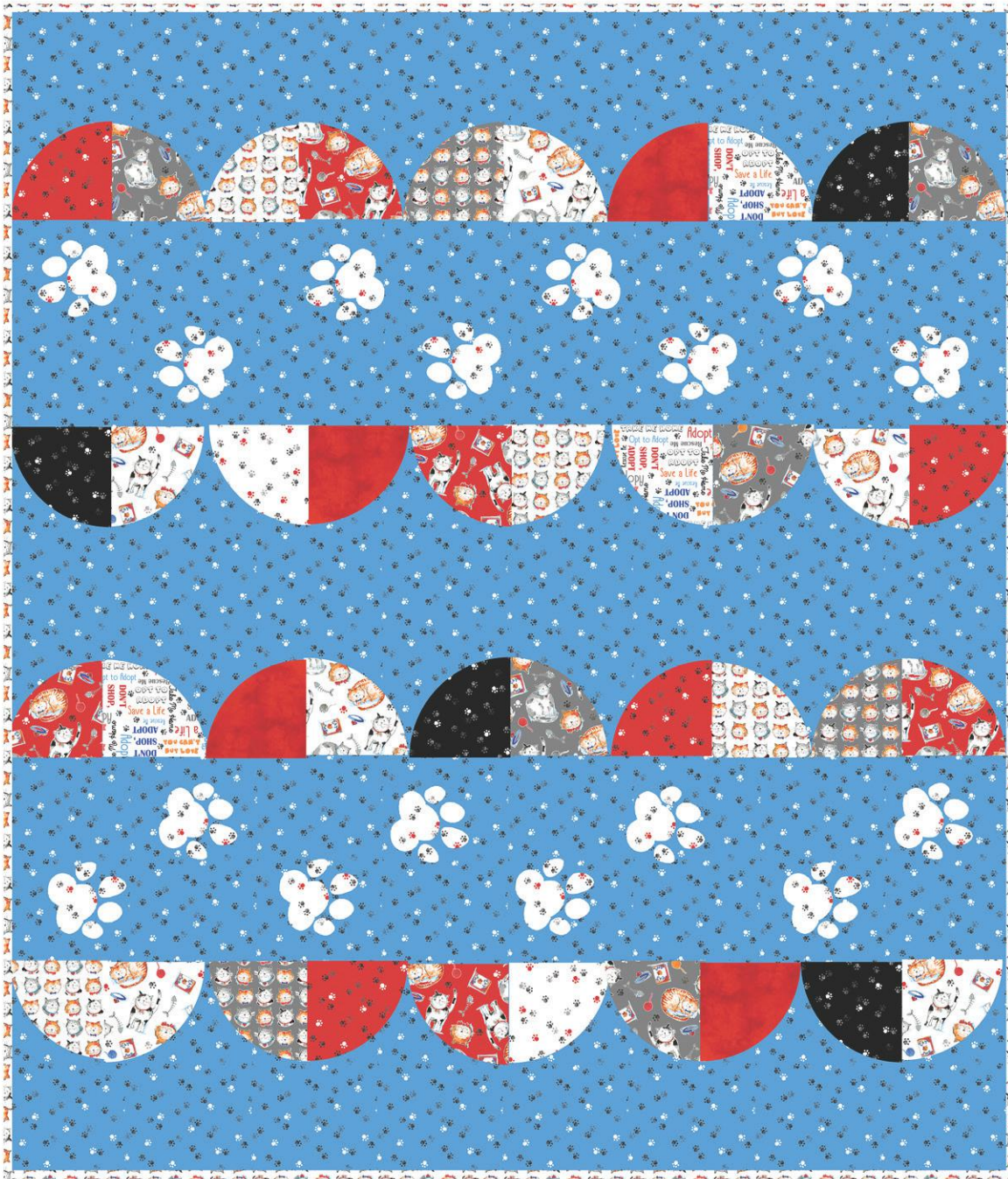
Finish the Quilt

Layer, baste, and quilt as desired. Bind using K 2 1/4" strips.



Hot Dogs

Placement Diagram



Template Printing Instructions

-Print using the latest version of Adobe Reader (available for free at www.adobe.com/products/reader.html). *Do Not* print from your browser, as this will not give you the full range of scaling options.

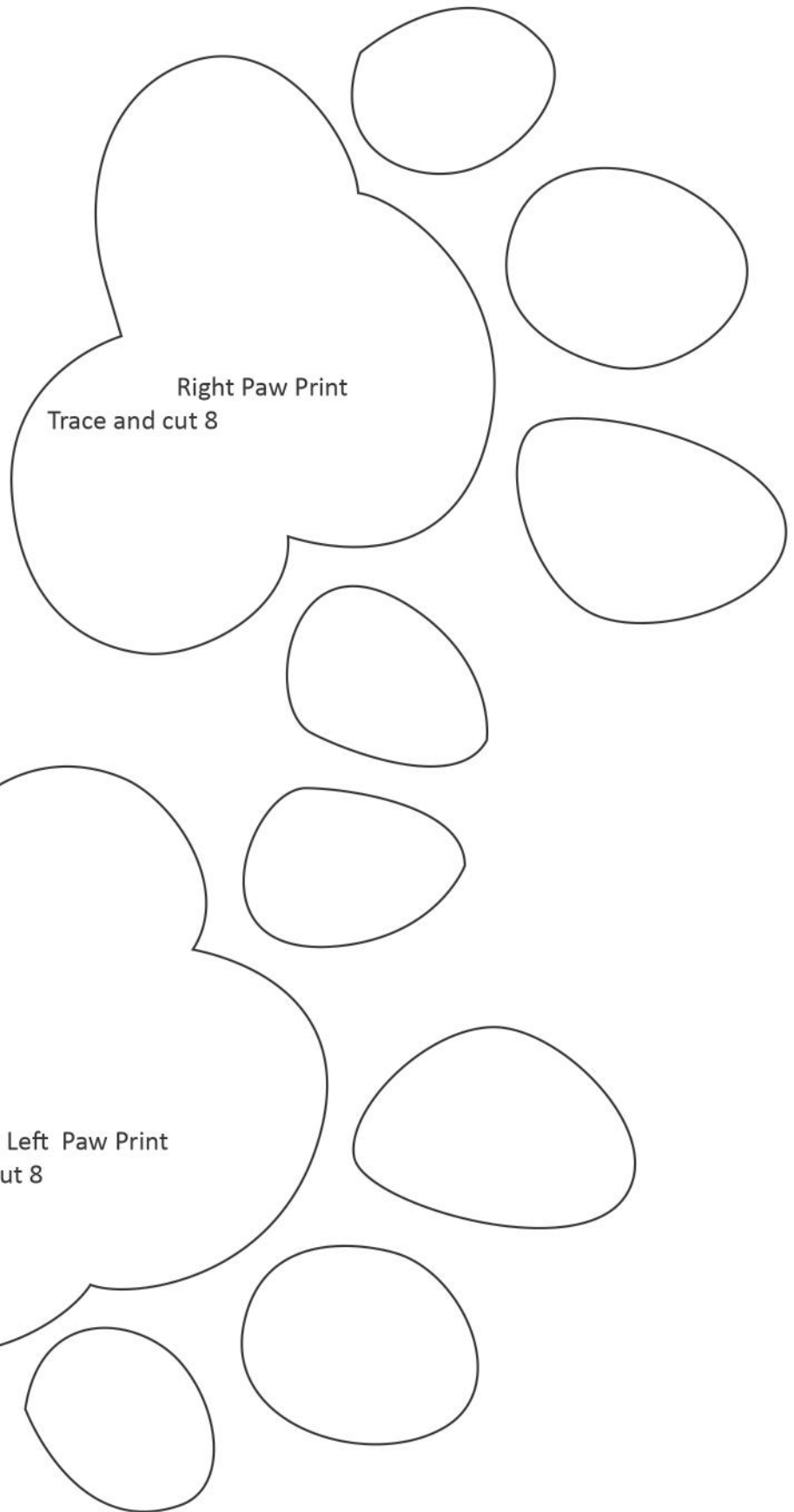
-Print full size: in print dialog box, set printer options to "**Do not scale**" or "**Actual Size.**"

-Refer to the grey one inch box to ensure printing at correct size.

-Templates are already reversed for tracing onto fusible web.

-Applique templates do not include seam allowance; piecing templates **do** include seam allowance.

1" X 1"



Drunkard's Path Piecing Templates
(templates include 1/4" seam allowance)

6 1/2"

Arc Template

1" X 1"

6 1/2"

Wedge Template

6 1/2"

6 1/2"

